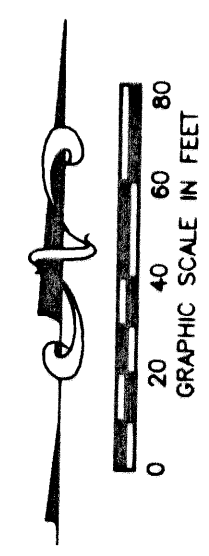


STATE OF FLORIDA
COUNTY OF PALM BEACH
THIS PLAT WAS FILED FOR
RECORD
THIS _____ DAY OF _____
AD, 2002 AND DULY RECORDED
IN PLAT BOOK _____ ON PAGES
_____ AND _____
DOROTHY H. WILKEN, CLERK
BY: _____, D.C.

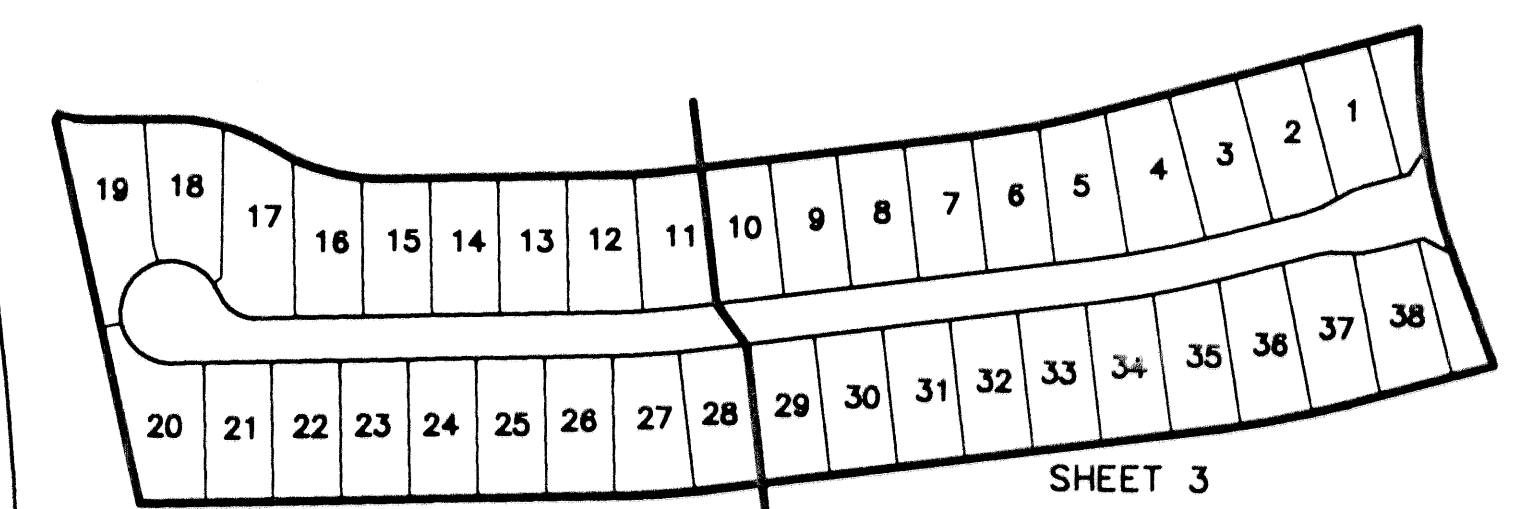
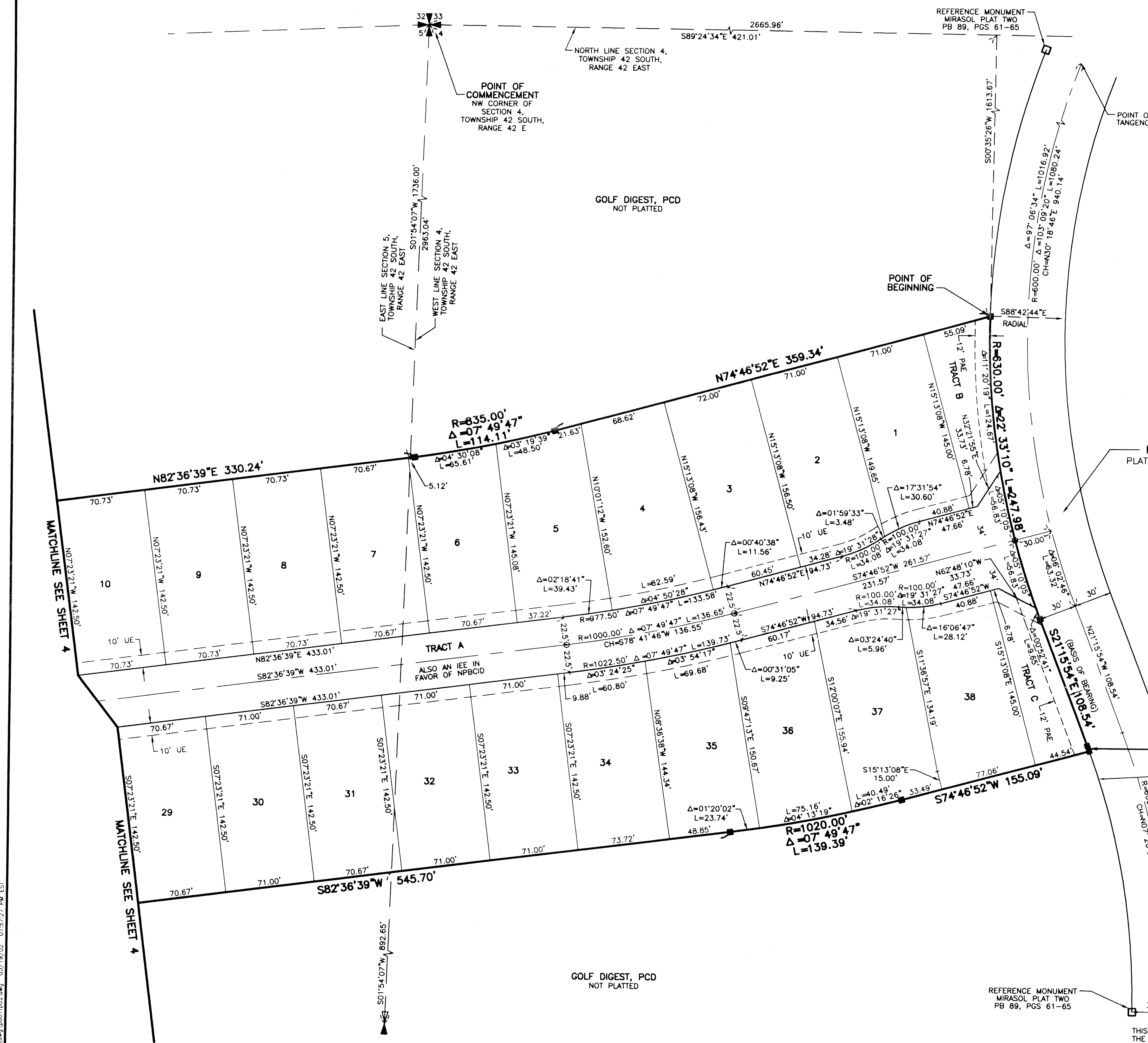


CIRCUIT COURT SEAL

MIRASOL PARCEL SEVEN

PART OF GOLF DIGEST P.C.D.
SECTIONS 4 AND 5, TOWNSHIP 42 SOUTH,
RANGE 42 EAST,
CITY OF PALM BEACH GARDENS,
PALM BEACH COUNTY, FLORIDA
SHEET 3 OF 4

- LEGEND**
- Δ CENTRAL (DELTA) ANGLE
 - CH CHORD
 - DE DRAINAGE EASEMENT
 - IEE INGRESS-EGRESS EASEMENT
 - FPL FLORIDA POWER AND LIGHT
 - L ARC LENGTH
 - NPBC/D NORTHERN PALM BEACH COUNTY IMPROVEMENT DISTRICT
 - (NR) NON-RADIAL
 - ORB OFFICIAL RECORD BOOK
 - PAE PEDESTRIAN ACCESS EASEMENT
 - PB PLAT BOOK
 - PG(S) PAGE(S)
 - PCD PLANNED COMMUNITY DEVELOPMENT
 - R RADIUS
 - UE UTILITY EASEMENT
 - WLE WATER LINE EASEMENT
 - PERMANENT REFERENCE MONUMENT FOUND LB 048 (4"x4" CONCRETE)
 - PERMANENT REFERENCE MONUMENT SET LB 048 (4"x4" CONCRETE)
 - SET LB 048
 - ⊙ PERMANENT CONTROL POINT
 - ⊕ CENTERLINE
 - ⊖ CURVE TABLE REFERENCE



SHEET LOCATION MAP
NOT TO SCALE

THIS INSTRUMENT WAS PREPARED BY MARY HANNA CLODFELTER, P.S.M. IN THE OFFICES OF MOCK, ROOS & ASSOCIATES, INC., 5720 CORPORATE WAY, WEST PALM BEACH, FLORIDA 33407.

SCALE:
1"=40'
P.A. NO.:
99361.00
DATE:
OCTOBER, 2001
DRAWING NO.:
42-42-04-101

FLORIDA L.B. NO. 48

MOCK • ROOS
ENGINEERS • SURVEYORS • PLANNERS

5720 Corporate Way, West Palm Beach, Florida 33407
(561) 683-3113, fax 478-7248

SHEET 3 OF 4

MIRASOL PARCEL SEVEN
PART OF GOLF DIGEST P.C.D.,
SITUATE IN SECTIONS 4 AND 5,
TOWNSHIP 42 SOUTH, RANGE 42 EAST,
CITY OF PALM BEACH GARDENS,
PALM BEACH COUNTY, FLORIDA

S:\work\comp\p07\dwg\p07r002.dwg 03/19/02 01:57:27 PM EST

REV.: 02-05-02
CAD FILE:
TAYLPA07.PA07RPO2